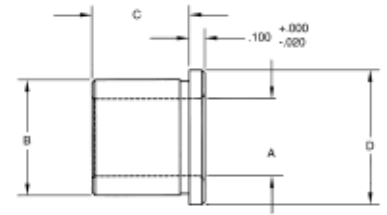


Bullet Nose Dowel Liners



▶ Application: Bullet nose pins are frequently used in aligning fixtures together by mating the pins within the liners at a precise location.

- ▶ Material: 1144 steel
- ▶ Hardness: HRC 61-65
- ▶ Black oxide finish
- ▶ Tolerances: ID (A) = +.0004 / -.0000
OD (B) = +.0000 / -.0005

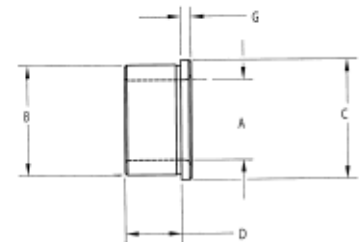


PART #	A	D	B	C
PL-1025	.2501	.5017	3/8	5/8
PL-1031	.3126	.5017	3/8	5/8
PL-1037	.3751	.6267	1/2	3/4
PL-1050	.5001	.7518	5/8	7/8

Bullet Nose Pin Liners



- ▶ Material: 1144 steel
- ▶ Hardness: HRC 61-65
- ▶ Black oxide finish
- ▶ Tolerances: ID (A) = +.0004 / -.0000
OD (B) = +.0000 / -.0005



PART #	A	B	C	D	G
PL-2025	.2501	.4078	9/16	7/16	1/16
PL-2031	.3126	.5017	5/8	7/16	1/16
PL-2037	.3751	.6267	3/4	1/2	1/16
PL-2050	.5001	.7518	7/8	1/2	1/16
PL-2075	.7502	1.0018	1-1/8	1/2	1/8
PL-2100	1.0002	1.3771	1-1/2	11/16	1/8